



The SMARTA-NET Project

Sustainable rural mobility for resilience in support of ecotourism -
Eine europaweite Initiative zur Förderung
nachhaltiger Mobilitätslösungen im ländlichen Raum



Bente Grimm, NIT

11. Tourismus-Mobilitätstag, 17. September 2024 in Zell am See-Kaprun
(Austria)



SMARTA-NET main strands



- **Establish a European Rural Mobility Network (ERMN)**



- **Develop Guidance Documents**

on mobility for rural municipalities



- **Implement training and capacity building**

in each of the member countries

CONSORTIUM



Project
Coordinator



Evaluation and
policy development



Sustainable
Tourism



SUMP and
training



Engagement and
Networking

Supported by

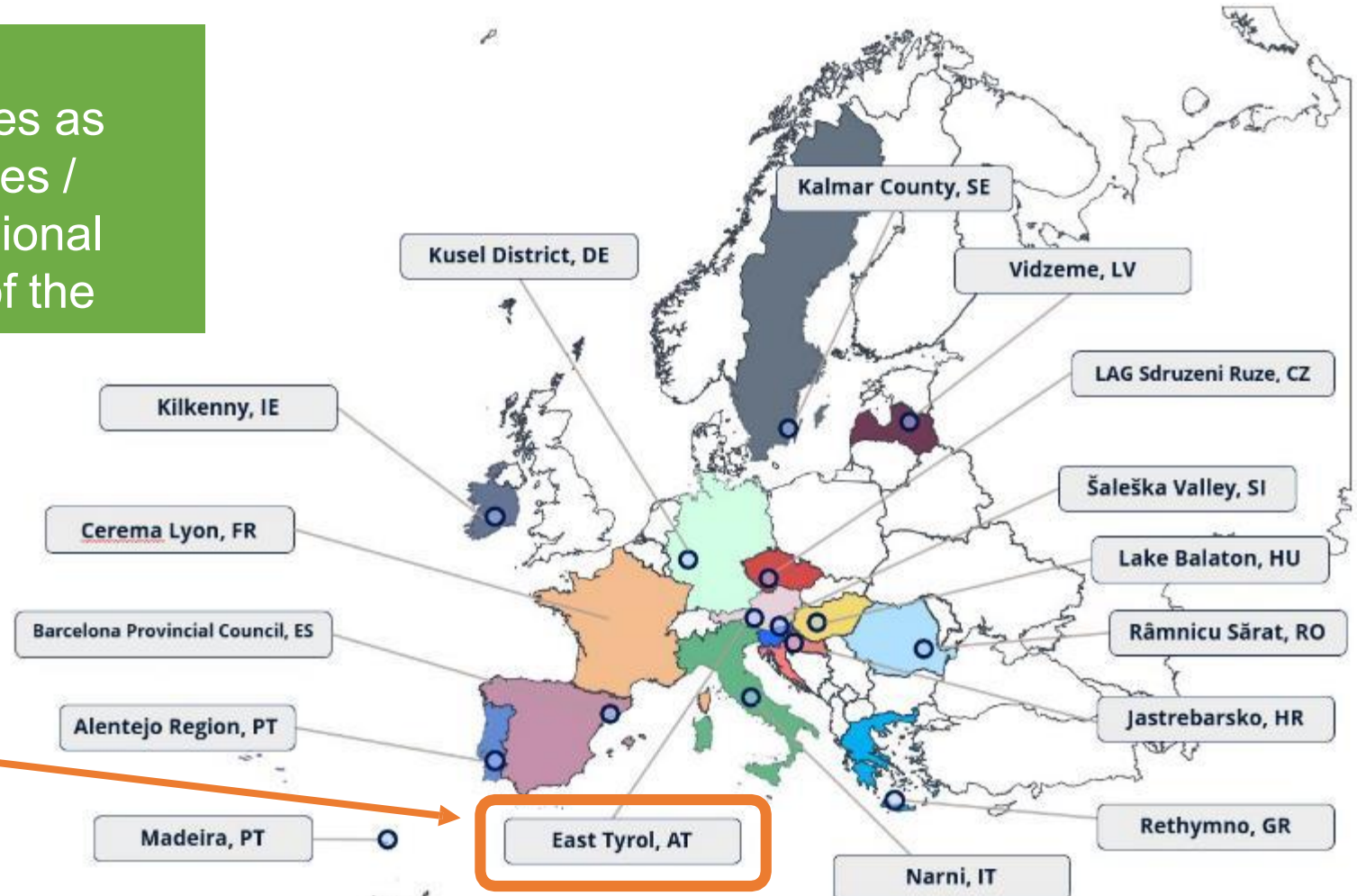


DG MOVE
DG AGRI

Working with rural municipalities all over Europe

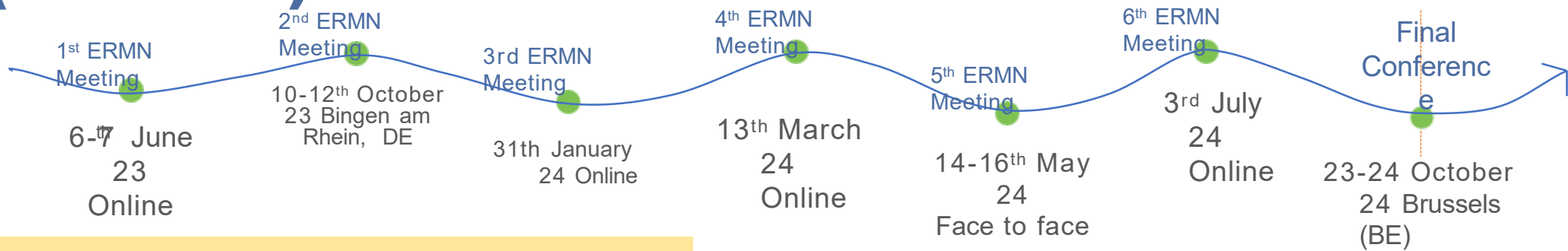
Lighthouse Sites – representing both municipalities as well as higher level local entities / multipliers (e.g. LAGs and regional authorities) – core members of the

Austrian Lighthouse site



<https://www.smarta-net.eu/lighthouse-sites/>

European Rural Mobility Network (ERMN)



PURPOSE

- Provide Europe's first network and forum on rural mobility
- Bring together municipalities, multipliers, associations and practitioners together
- Share experience, both peer-to-peer and structured collective outputs

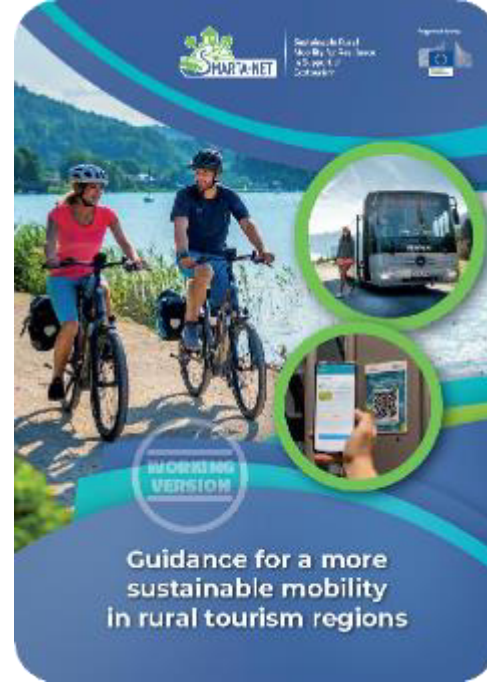
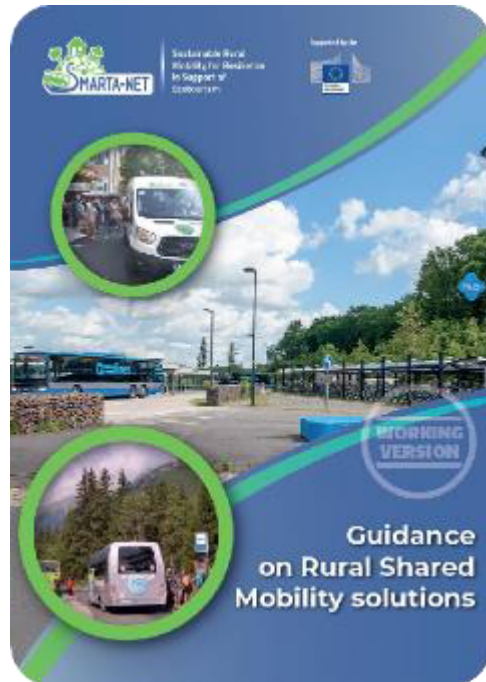
<https://www.smarta-net.eu/ermn/>

PROGRESSION

PATH

- Future of the ERMN beyond the project, to be shaped by the Members themselves during 2024
- Widening of membership scope and scale to be the leading voice of the sector
- Develop policy and other recommendations to influence European, national and regional frameworks, programs and funding for rural mobility

SMARTA-NET Guidances



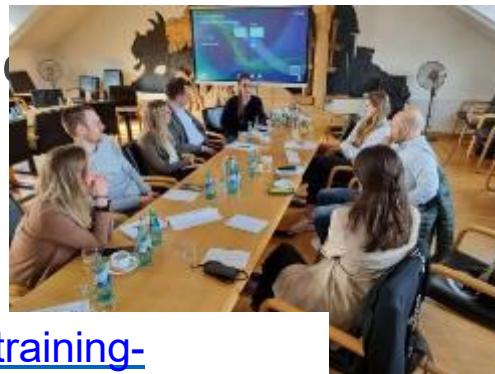
In preparation

Guidance on the integration of **rural dimension** into Sustainable Urban Mobility Plan (SUMP) guides

Guidance on the identification and access to **financing sources** for sustainable rural mobility solutions

SMARTA-NET In-country training

- **Concept:** Structured set of 4 training sessions on rural mobility, in-country, own language
- **Approach:** Blend of lecture-mode, interactive workshops and roundtable discussions
- **15 countries covered** (lighthouse sites)
- **Trainees:** Planners, PT/mobility organizer, tourism managers, community representatives, associations and networks



<https://www.smarta-net.eu/training-sessions/>

CONTA CT



Bente Grimm (Leiterin Touristische Mobilitätsforschung)
Institut für Tourismus- und Bäderforschung in Nordeuropa
GmbH Fleethörn 23, D - 24103 Kiel
Tel. +49-431-666 567 18, bente.grimm@nit-kiel.de

Final conference in Brussels
on October 23rd/24th, 2024
[https://www.smarta-net.eu/final-
conference/](https://www.smarta-net.eu/final-conference/)



	Website: www.smarta-net.eu
	Twitter: SmartaNet23
	Facebook: Smarta-Net
	LinkedIn: Smarta-Net

